

# BVQ

# BOM for March 2015

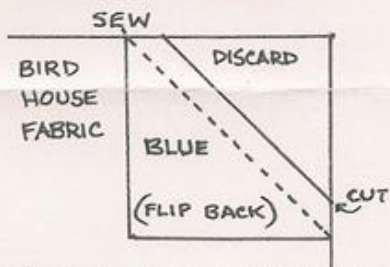


### WHAT'S NEEDED:

- 2 2 1/2" x 10 1/2" SKY BLUE
- 1 2 1/2" x 6 1/2" "
- 2 2 1/2" x 3" "
- 2 3 1/2" x 3 1/2" "
- 1 1 1/2" x 2 1/2" BROWN
- 1 1 1/2" x 1 1/2" BLACK
- 1 6 1/2" x 6 1/2" YOUR CHOICE  
(FABRIC FOR BIRD HOUSE)

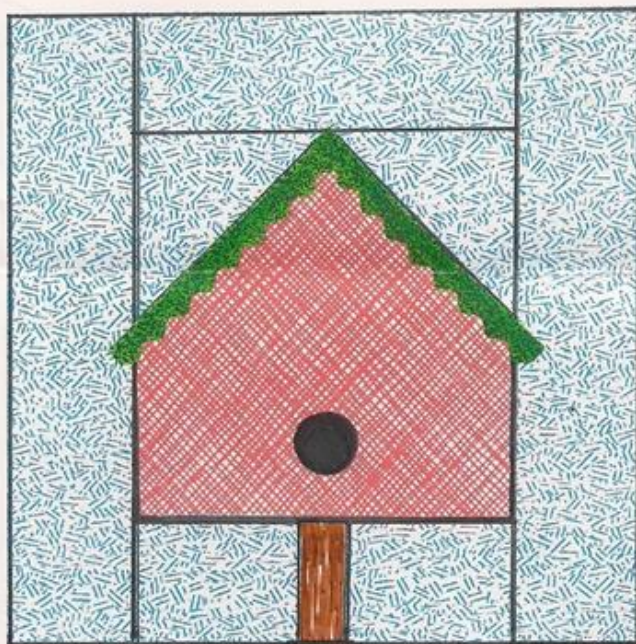
### DIRECTIONS:

- LAY A 3 1/2" SQ ON EACH TOP CORNER OF 6 1/2" SQ.



- SEW BROWN TO 2 1/2" x 3" BLUES.
- FOLLOW DIAGRAM TO FINISH.
- ADD BONDING TO 1 1/2" SQ. BLK.
- USE 25¢ TO MAKE CIRCLE, CUT + ATTACH. STITCH AROUND EDGE.
- USE RICK RACK, BIATAPE OR OTHER TRIM FOR ROOF

? CALL SONIA: 610-269-0934



10 1/2" UNFINISHED

