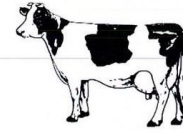


Brandywine Valley Quilters



June 2020 Block of the Month



Rolling Nine-Patch

The month of June comes from the Roman or Julian calendar. June was initially named mensis Iunius. The name either comes from the Roman goddess Juno, wife of Jupiter or from the word "iuniores," the Latin word for "younger ones". In the early Roman calendar, June only had 29 days. It was Julius Caesar who added the additional day giving June 30 days.



Flag Day – June 14

National Rose Month

National Dairy Month

June is a great month to get married.



Anne Marie Kiesling

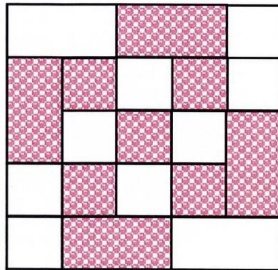
876-6552

10 ½" unfinished

10" finished

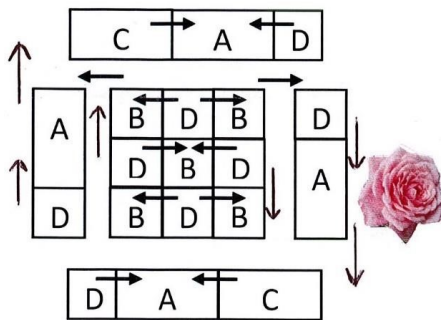
Fabrics:

One small old-fashioned floral calico print. **One solid white or white on white for the background.** **Note: No animal, comic, theme fabrics, etc. Only use old-fashioned calico print.** **Note: If using a small stripe floral print, make sure there is enough fabric to cut the individual pieces in one direction.**



Cutting:

- 4 2 ½" x 4 ½" rectangle print for letter A
- 5 2 ½" x 2 ½" square print for letter B
- 2 2 ½" x 4 ½" rectangle white or white on white for letter C
- 8 2 ½" x 2 ½" square white or white on white for letter D



Sewing:

Looking at the center nine-patch unit from top to bottom, sew all the squares with the letter B to letter D and press according to the arrows. Then sew the three rows together according to the **sample** at the left and press according to the arrows. Next, sew letter C, A and D together for the top and bottom units and press according to the arrows. Sew letter A to letter D for the side units and press according to the arrows. Sew the side units to the center nine-patch unit and press outward. Sew the top and bottom units and press according to the arrows.

Suggestions: *This block would make a nice soft-color baby quilt with narrow sashing. Also, a bed size quilt for those cool Spring nights.*

Anne Marie's Scrap Tip

Cut a flannel-backed plastic table cloth into 18" squares. As the pieces for the blocks are cut, lay them in order on the flannel side of the squares. Keep the squares next to the sewing machine to keep the pieces in proper order.